



W GRAND RIVER/WYOMING - 2,800 SFT RETAIL/STORAGE

10031 PLYMOUTH, Detroit, MI 48204

For Sale or Lease



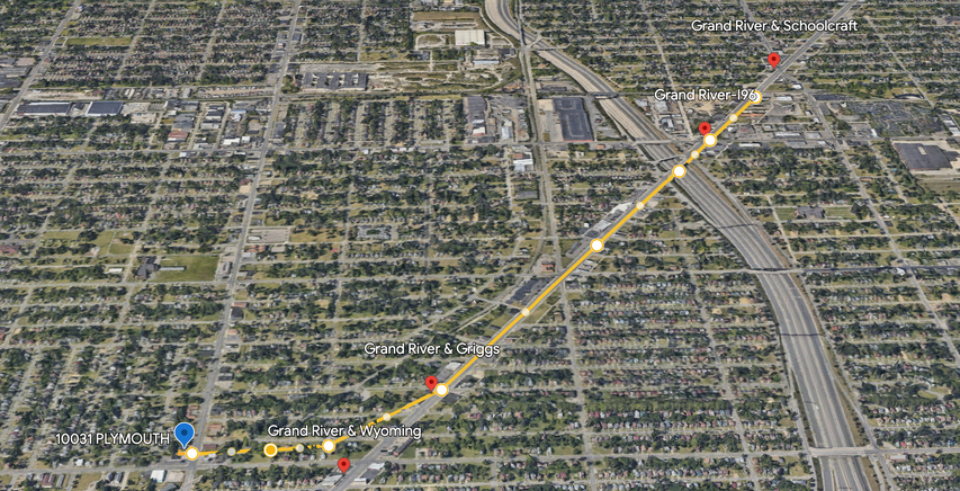
County: Wayne
Zoning: B4 Store/Retail
Land: 8,000 SFT (80' front x 100' depth)
Building: 2,800 sft constructed in 1950
Price: \$150,000 - \$10.71 psf NNN - 5% annual increases

Contact:
Jason Gage
gage@summitcommercialllc.com
Jerome Eagger
eagger@summitcommercialllc.com



For more information: www.summitcommercialllc.com (313) 872-1300

The information contained herein has been given to us by the owner of the property or other sources we deem reliable. We have no reason to doubt its accuracy, but we do not guarantee it. All information should be verified prior to lease or purchase.



PROPERTY FEATURES

- Flexible Space - Open Plan Possible
- Expenses \$1.50 psf - Tenant Pays All Utilities
- New Electric Panel 600 AMP
- Private Parking Area Included
- Excellent Westside Location at Wyoming
- Next to CITGO & SUNOCO Gas Stations



For more information:

www.summitcommercialllc.com

(313) 872-1300

The information contained herein has been given to us by the owner of the property or other sources we deem reliable. We have no reason to doubt its accuracy, but we do not guarantee it. All information should be verified prior to lease or purchase.

PICTURES



For more information:

www.summitcommercialllc.com

(313) 872-1300

The information contained herein has been given to us by the owner of the property or other sources we deem reliable. We have no reason to doubt its accuracy, but we do not guarantee it. All information should be verified prior to lease or purchase.